

Dott. Arch. Massimo DESMERO
Via Roma n°59 - 0171 260476
12011 - Borgo San Dalmazzo (CN)

Dott. Arch. Lorenzo MARTINELLI
Dott. Arch. Sergio ZORNIOTTI
Via Staffarda n°7 - 0172 636426
12045 - Fossano (CN)

COMUNE	LIMONE PIEMONTE
OGGETTO	INTERVENTO
	TURISTICO RICETTIVO
	LOCALITA' CAMPO PRINCIPE
	ZONA URBANISTICA 3/TR2/G.2
COMMITT.	S.A.I. s.r.l. - Porta Rossa S.p.A.

TIPOLOGIA EDILIZIA - TURISTICO RICETTIVA
EDIFICIO D - Pianta Piani Fuori Terra e Prospetti

Pratica 3296 - 1703
Data APRILE 2018
Aggiorn. OTTOBRE 2018
Aggiorn.

Scala
1:100

Tavola
9.e

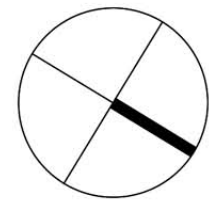
Volume Totale Edificio
1'620 mc

Superficie Utile Lorda Edificio
568 mq

Totale Alloggi Edificio
n. 7

Volume Totale Piano
230 mc

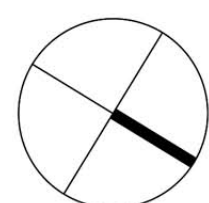
Superficie Utile Lorda Piano
81 mq



PINATA PIANO SOTTOTETTO
Scala 1:100

Volume Totale Piano
480 mc

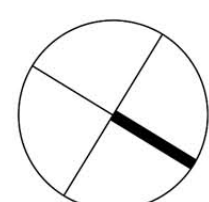
Superficie Utile Lorda Piano
168 mq



PINATA PIANO SECONDO
Scala 1:100

Volume Totale Piano
610 mc

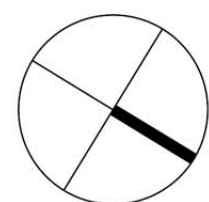
Superficie Utile Lorda Piano
214 mq



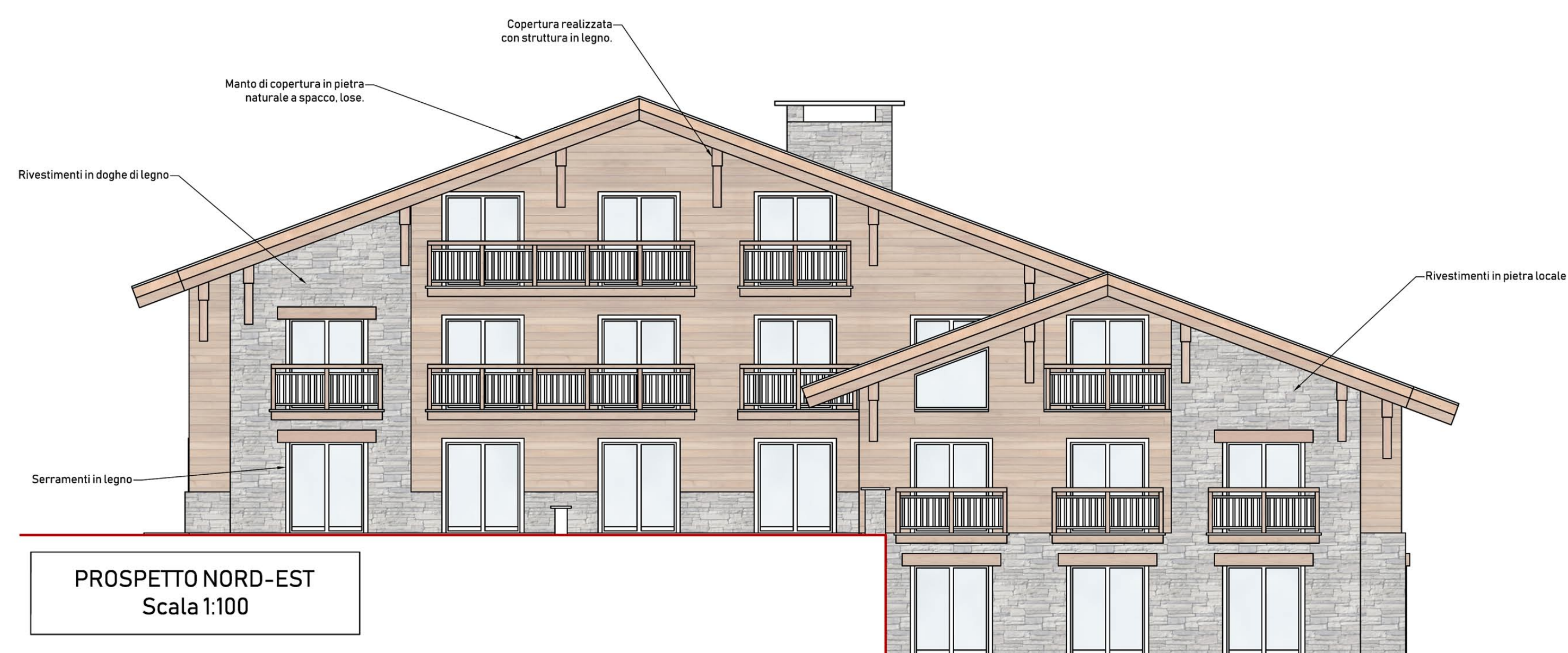
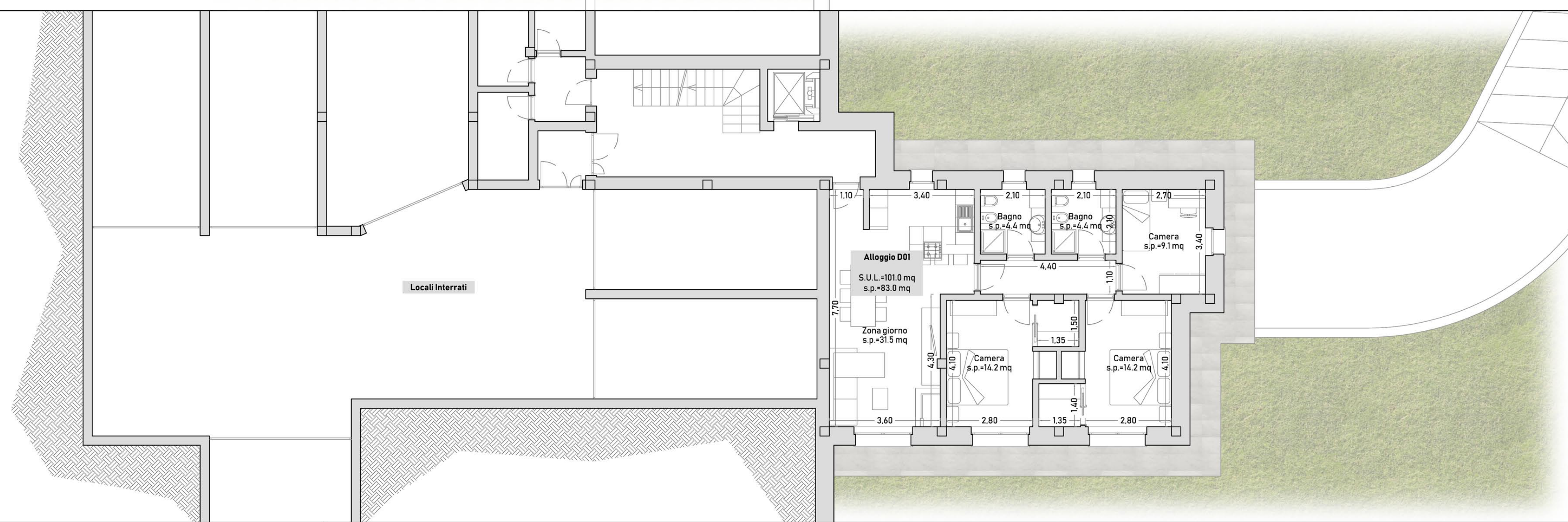
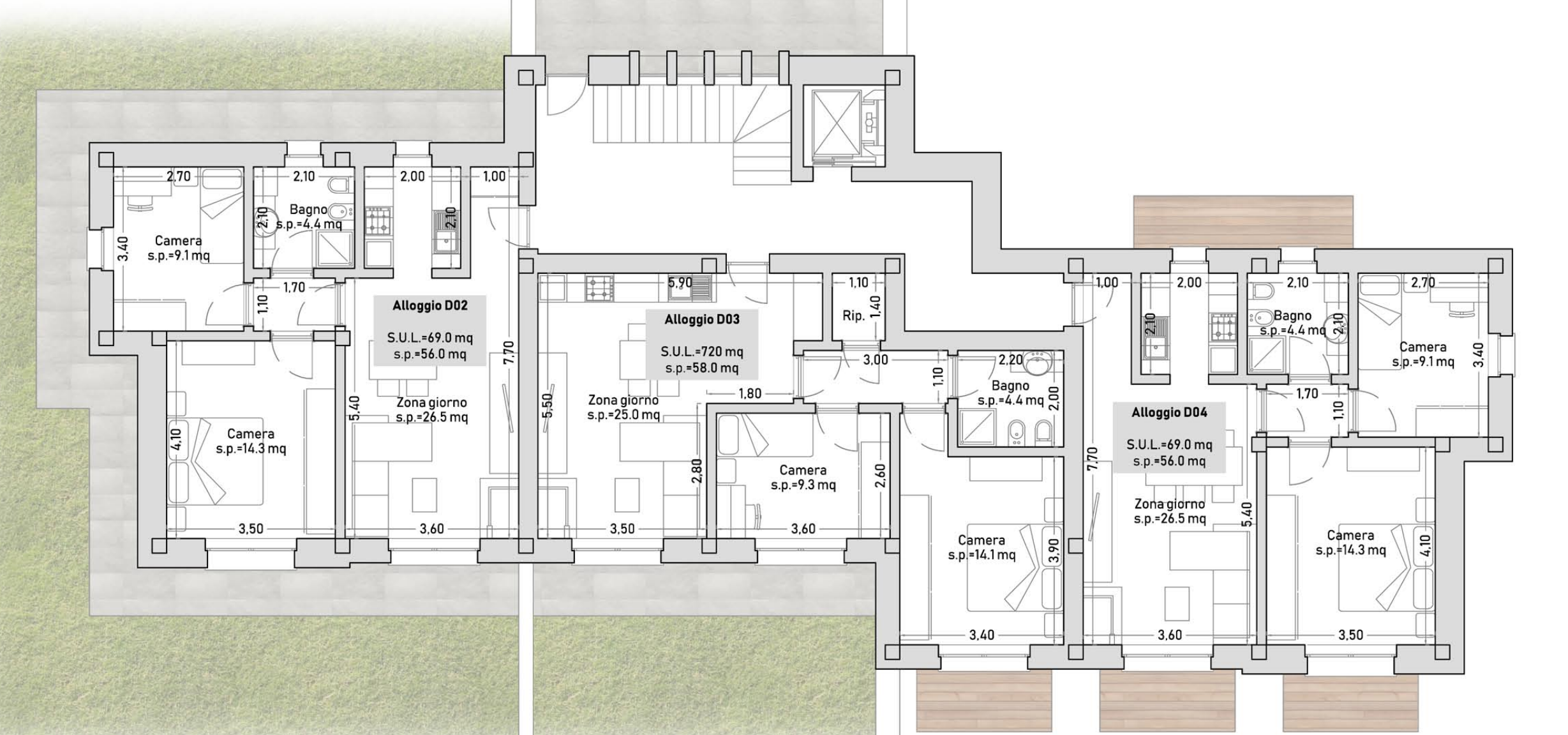
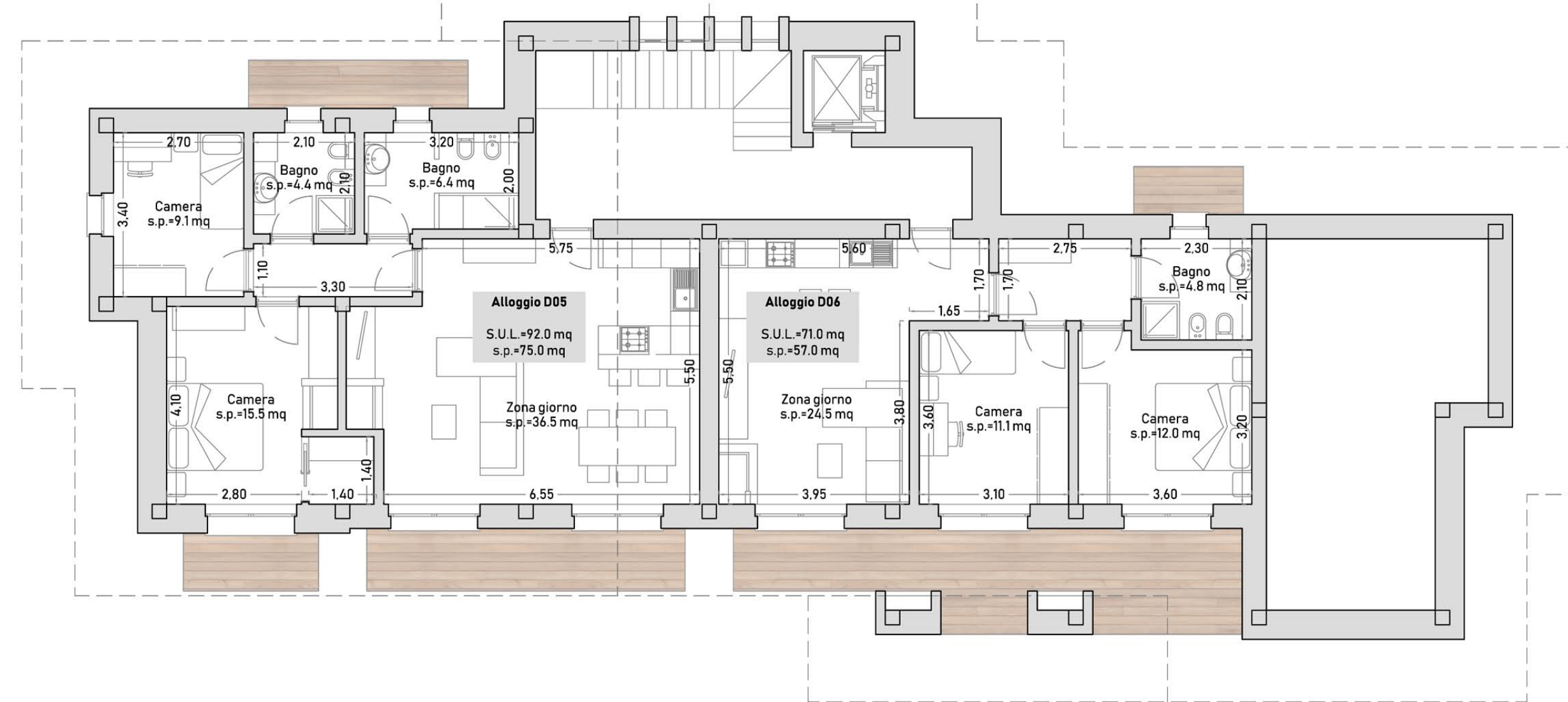
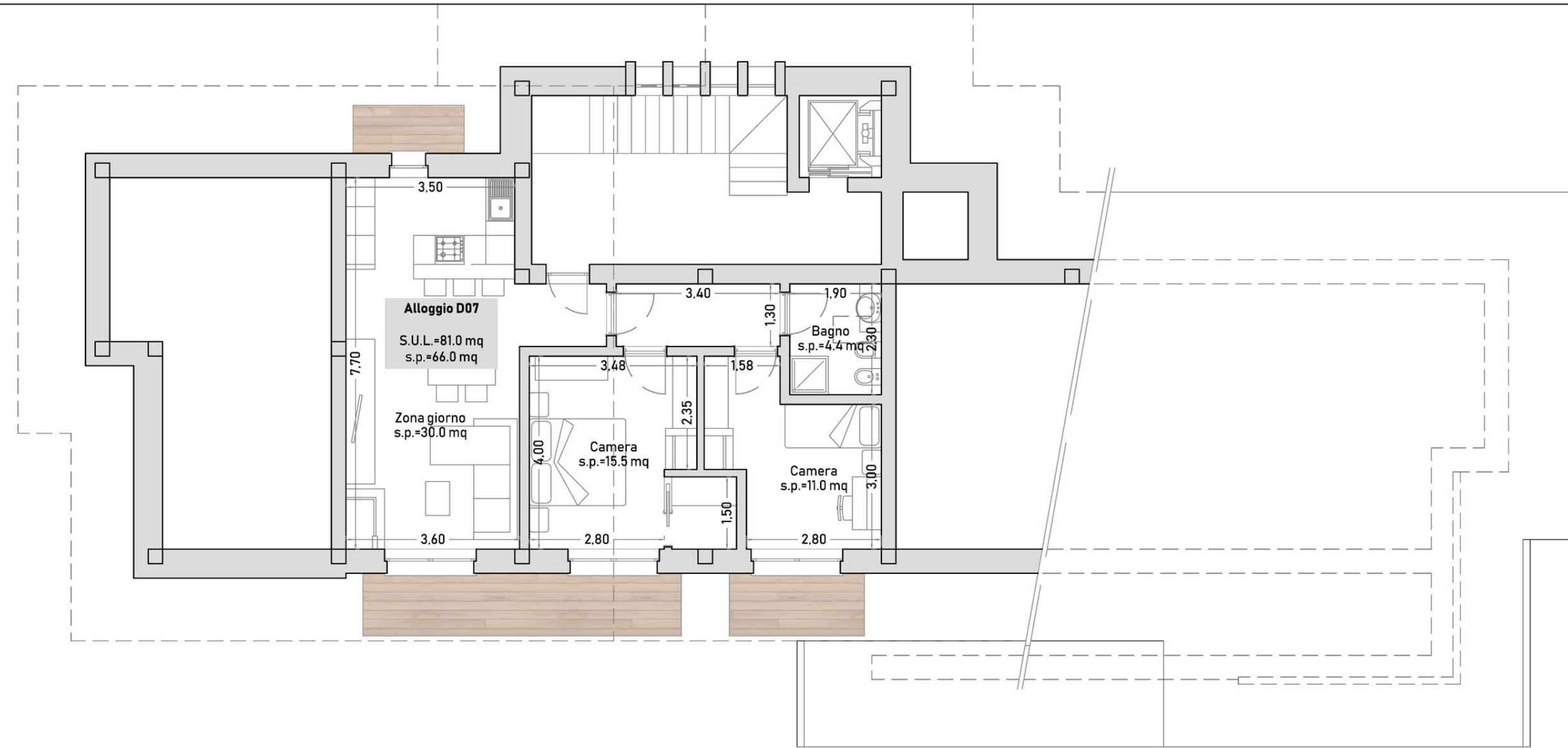
PINATA PIANO PRIMO
Scala 1:100

Volume Totale Piano
300 mc

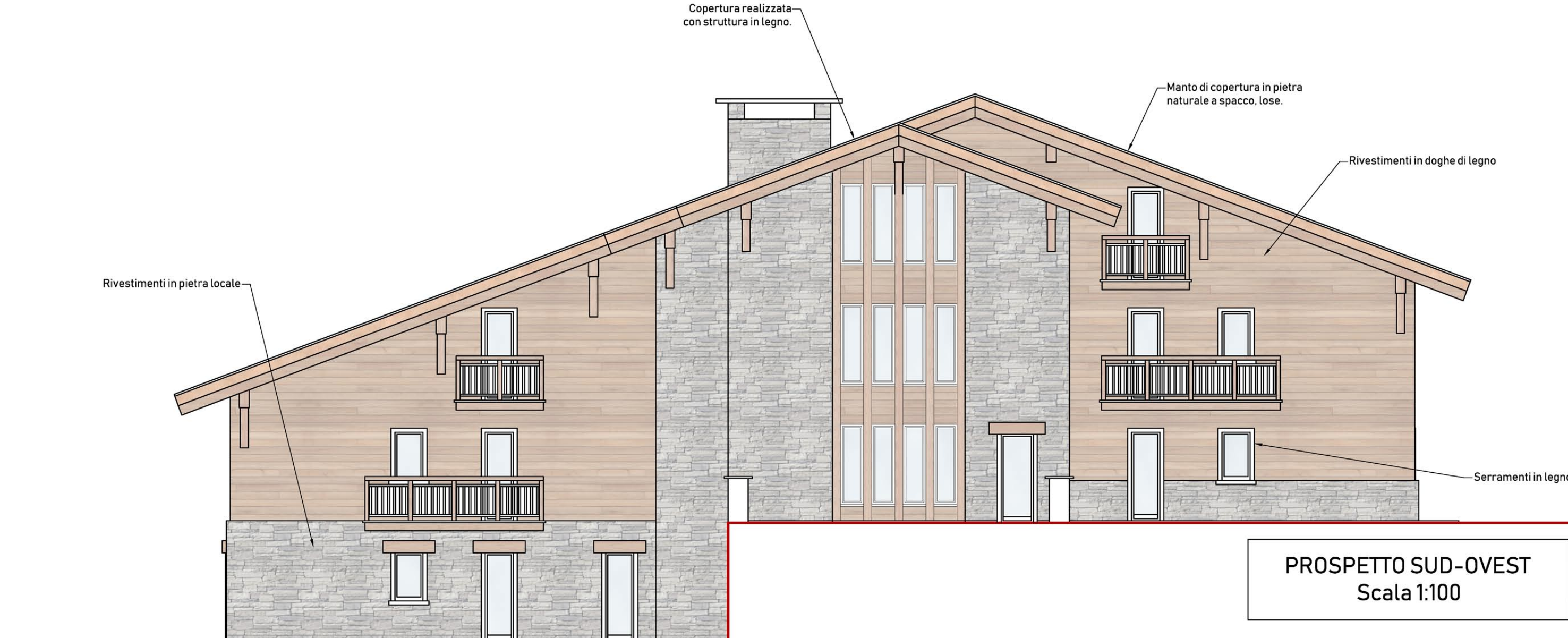
Superficie Utile Lorda Piano
105 mq



PIANTA PIANO TERRA
Scala 1:100



PROSPETTO NORD-EST
Scala 1:100



PROSPETTO SUD-OVEST
Scala 1:100